

Facility Rentals

CONTENTS

2	CLASSROOM AND COMPUTER LAB RENTALS
4	ACTION LEARNING ENVIRONMENT (A.L.E. HOUSE)
6	INNOVATION LAB
8	CLASSROOMS
10	LABS
12	CONFERENCE ROOM
13	KITCHEN/BREAK ROOM

Classroom and Computer Lab Rentals

UMBC Training Centers is a state of the art corporate and government training facility conveniently located in the Columbia Gateway Corporate Office Park in Columbia, MD.

Training Centers' computer labs and classrooms can be made available on a rental basis to organizations looking for a modern, comfortable, and convenient location to hold training programs for their employees or their customers.

CONFERENCE ROOM

Day: \$450

Half day/Evening: \$300

CLASSROOMS 1-2, INNOVATION LAB

Day: \$450

Half day/Evening: \$300

ALE HOUSE

Day: \$750

Half day/Evening: \$550

<12 PERSON LAB

Day: \$750

>12 PERSON LAB

Day: \$875



TECHNICAL HIGHLIGHTS

- Dedicated onsite technical support staff
- Remote/virtual classroom capabilities
- Free Wireless “N” Internet Access throughout the facility
- Standard/Ceiling Mounted Projectors with Draper, 84” Wall Mounted Motorized Screens
- Projectors: InFocus interactive short/ceiling mounted projectors
- 150/150 Megabit FIOS high speed Internet Connection
- Additional tech support may be subject to rental surcharge

LAB HARDWARE

- Processors: Intel Core 2 Duo - Intel Core i7-3740QM 2.7GHz
- Memory: 8GB or 16GB
- Hard Drives (7200 RPM): 250GB or 500GB
- Screen: 15.6” widescreen display or 22” widescreen monitor
- Specifying hardware may limit availability

FACILITY HIGHLIGHTS

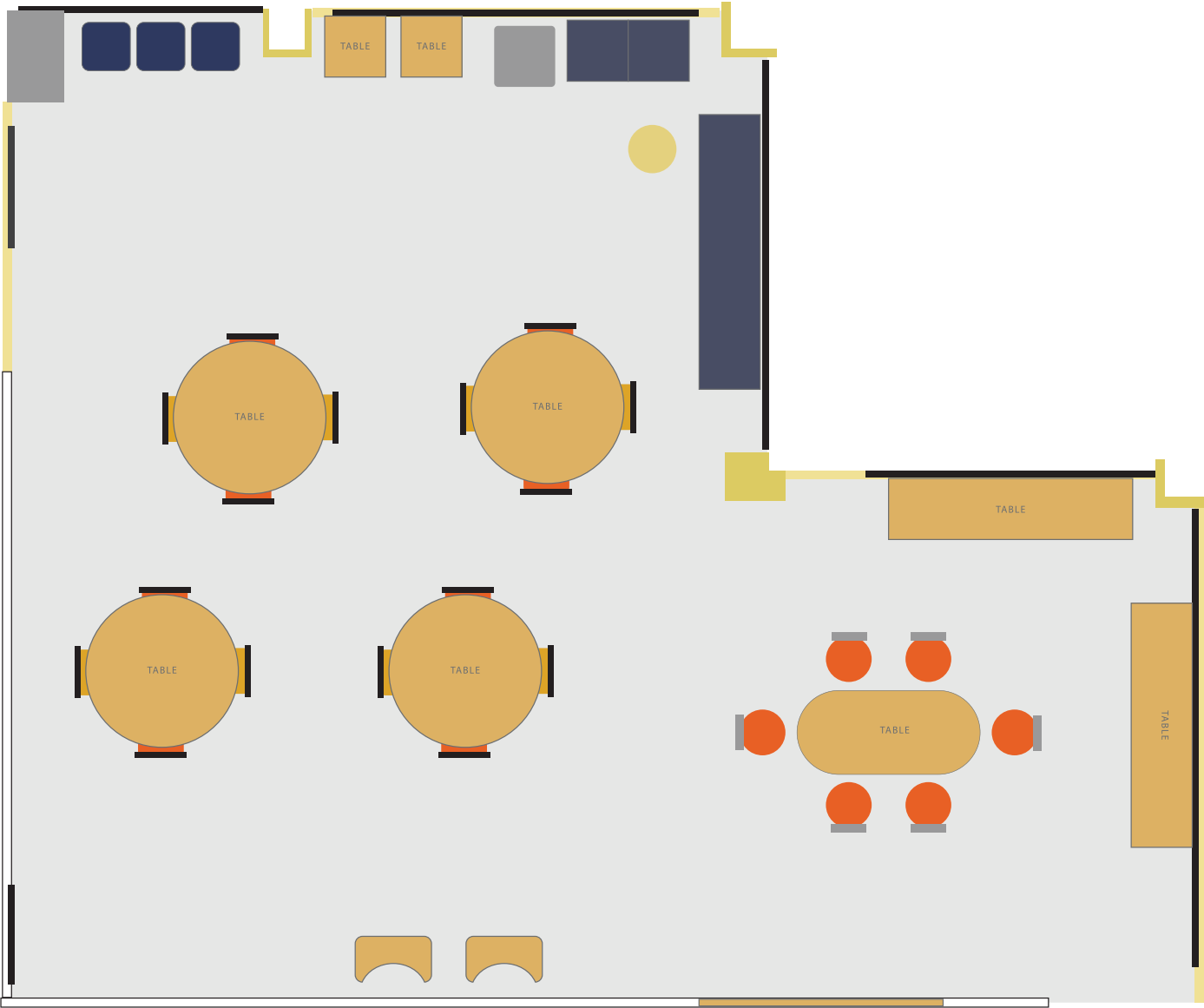
- 20,000 square feet of training space and offices
- Onsite receptionist, administrative, facility and technical support
- Prime location, directly between Baltimore and Washington, D.C. just off interstate 95 in Columbia, MD
- Free, convenient parking and first floor access
- Free beverages and snacks
- Available weekdays, evenings and weekends

LAB SOFTWARE

- Ubuntu Linux Operating System
- Google Chrome
- Mozilla Firefox
- Libre Office
- Remote desktop client (Remmina)
- Oracle VirtualBox
- Additional software installs may be subject to rental surcharge



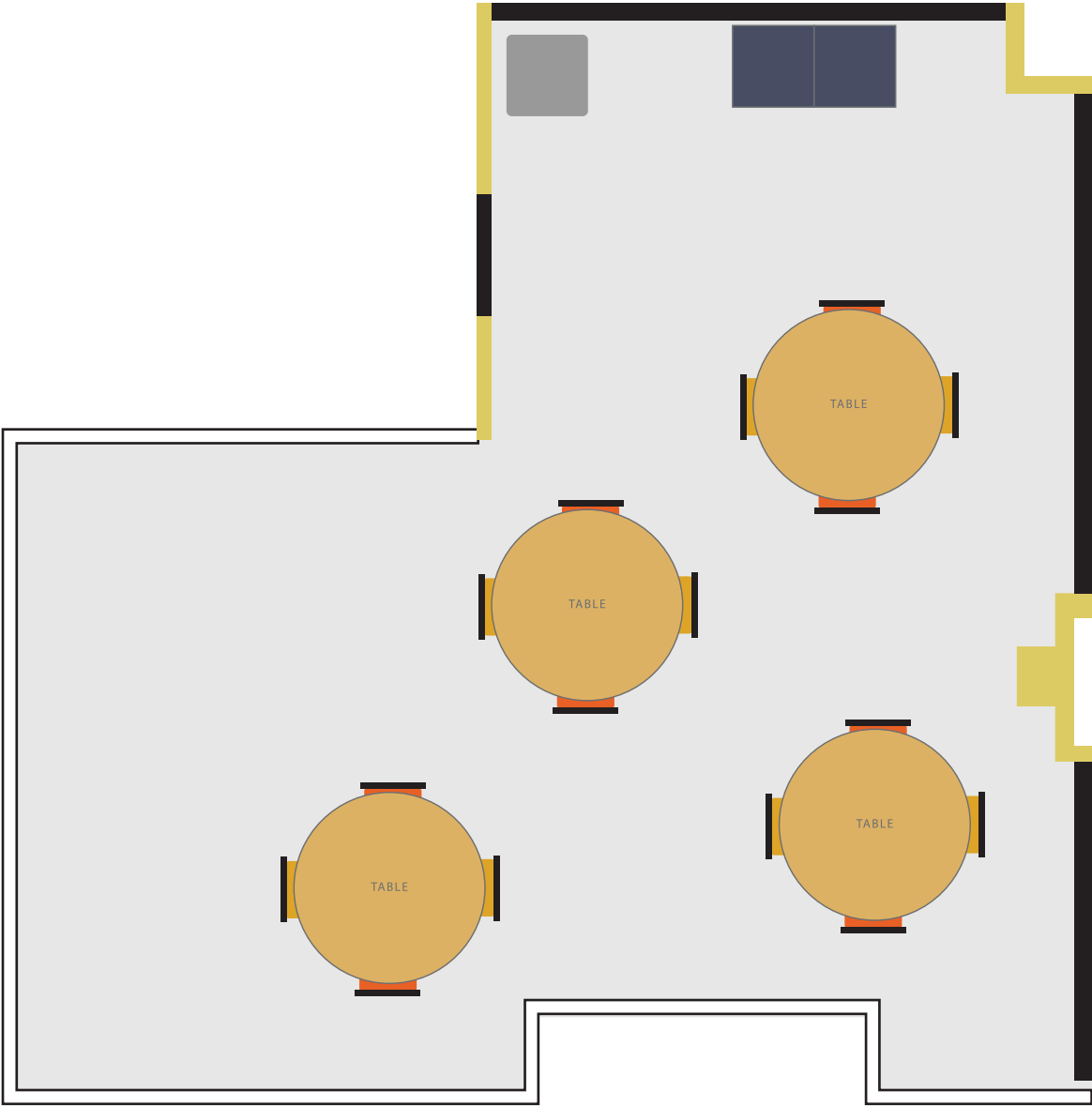
Action Learning Environment (A.L.E. House)



5 | ACTION LEARNING ENVIRONMENT (A.L.E. HOUSE)



Innovation Lab





Classrooms





Labs

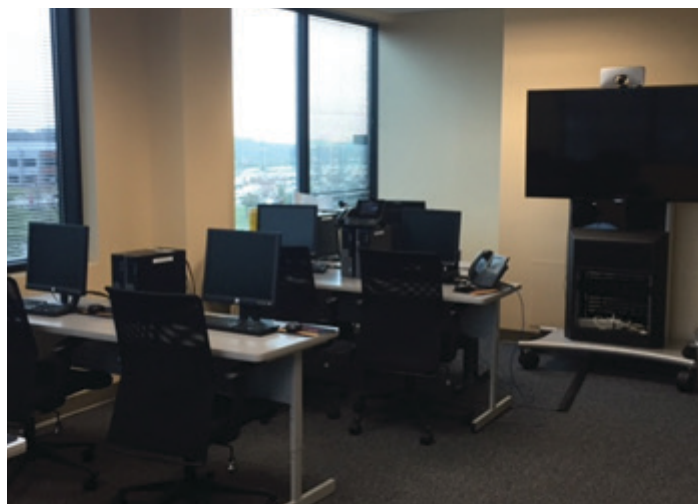
LAB HARDWARE

- Processors: Intel Core 2 Duo - Intel Core i7-3740QM 2.7GHz
- Memory: 8GB or 16GB
- Hard Drives (7200 RPM): 250GB or 500GB
- Screen: 15.6" widescreen display or 22" widescreen monitor
- Specifying hardware may limit availability

STANDARD LAB SOFTWARE

- Ubuntu Linux Operating System
- Google Chrome
- Mozilla Firefox
- Libre Office
- Remote desktop client (Remmina)
- Oracle VirtualBox
- Additional software installs may be subject to rental surcharge





Conference Room

- Temperature control
- Standard/Ceiling Mounted Projectors with Draper, 84" Wall Mounted Motorized Screens
- Phone and Speaker system



Kitchen/Break Room

- Complementary coffee, tea, sodas, juice and snacks
- Comfortable dining tables, including high top bar table and stools
- Vending Machine
- Refrigerator
- Microwave Oven
- Toaster/Toaster Oven
- Hot and Cold Filtered Water Dispenser

